

Cavity wall lintels - Uneven Loads

CC16 range

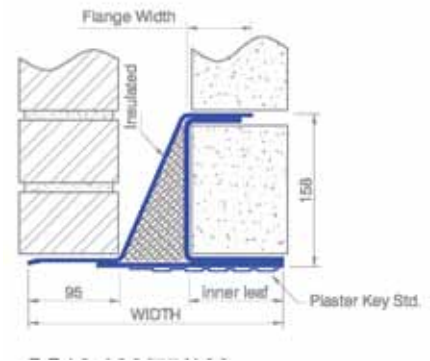
The CC16 range are tough, low profile lintels, for demanding applications where height is restricted

Need stronger? Try the CC23 >

Specification table for CC16 Lintels

Nominal cavity size (mm)	Nominal inner leaf (mm)	SPECIFY	Overall Height (mm)	Overall Width (mm)	Steel Gauge (mm)	Mass (kg/m)	Form Type	Ixx (cm ⁴)	Zxx (cm ³)
47-56	100-115	CC16-100/50/100	158	242	3.0&4.0	20.8	2	1014.7	101.47
	125-140	CC16-100/50/125	158	267	3.0&4.0	21.4	2	1038.1	102.78
	190-215	CC16-100/50/190	158	332	3.0&4.0	22.9	2	1093.0	104.10
57-71	100-115	CC16-100/60/100	158	252	3.0&4.0	21.1	2	1020.0	100.99
	125-140	CC16-100/60/125	158	277	3.0&4.0	21.6	2	1042.8	102.24
	190-215	CC16-100/60/190	158	342	3.0&4.0	23.2	2	1097.0	103.49
72-84	100-115	CC16-100/75/100	158	267	3.0&4.0	21.5	2	1031.2	101.10
	125-140	CC16-100/75/125	158	292	3.0&4.0	22.1	2	1053.2	102.25
	190-215	CC16-100/75/190	158	357	3.0&4.0	23.6	2	1105.0	104.25
85-96	100-115	CC16-100/90/100	158	279	3.0&4.0	21.7	2	1023.8	99.40
	125-140	CC16-100/90/125	158	304	3.0&4.0	22.3	2	1044.8	100.46
	190-215	CC16-100/90/190	158	369	3.0&4.0	23.8	2	1094.0	101.30
97-119	100-115	CC16-100/100/100	158	292	3.0&4.0	22.0	2	1017.6	97.85
	125-140	CC16-100/100/125	158	317	3.0&4.0	22.6	2	1037.6	97.89
	190-215	CC16-100/100/190	158	382	3.0&4.0	24.1	2	1085.0	99.54
120-139	100-115	CC16-100/120/100	158	315	3.0	21.2	4	1010.0	98.06
	125-140	CC16-100/120/125	158	340	3.0	21.7	4	1030.7	98.16
	190-215	CC16-100/120/190	158	405	3.0	22.8	4	1010.0	91.82
140-160	100-115	CC16-100/140/100	158	335	3.0	21.5	4	974.4	91.92
	125-140	CC16-100/140/125	158	360	3.0	22.1	4	993.1	92.81
	190-215	CC16-100/140/190	158	425	3.0	23.6	4	1037.0	94.27

NOTES: The lintel form varies over the CC16 range; see bottom page 19. Form types 3&4 require a separate DPC over, types 1&2 do not, and are supplied complete with stop ends* to affix on site (refer pages 78&88).



Allowable load for all CC16 Lintels*

Opening span	Lintel std length	Max total load (kN)*	Load Example (see pg 83)
1200	1500	57.8	masonry & concrete floor
1350	1650	57.8	
1500	1800	57.8	
1650	1950	57.8	
1800	2100	57.8	
1950	2250	57.8	masonry & tiled roof
2100	2400	57.8	
2250	2550	55.5	
2400	2700	52.2	
2550	2850	49.3	masonry & timber floor
2700	3000	46.7	
2850	3150	44.4	
3000	3300	42.3	
3150	3450	40.3	
3300	3600	38.2	full height masonry
3450	3750	34.9	
3600	3900	32.1	
3750	4050	29.6	
3900	4200	27.3	
4050	4350	25.3	
4200	4500	23.6	
4350	4650	22.0	

Shorter & Intermediate lengths can be produced

Permissible Moment*: 16.6 kN.m
Permissible Point Load*: 22.2 kN

LOAD LOAD RATIO LIMITS* (OUTER : INNER)
65-100% Max load: 3:1 - 1:14 OR < 65% Max Load: 5:1 - 1:19

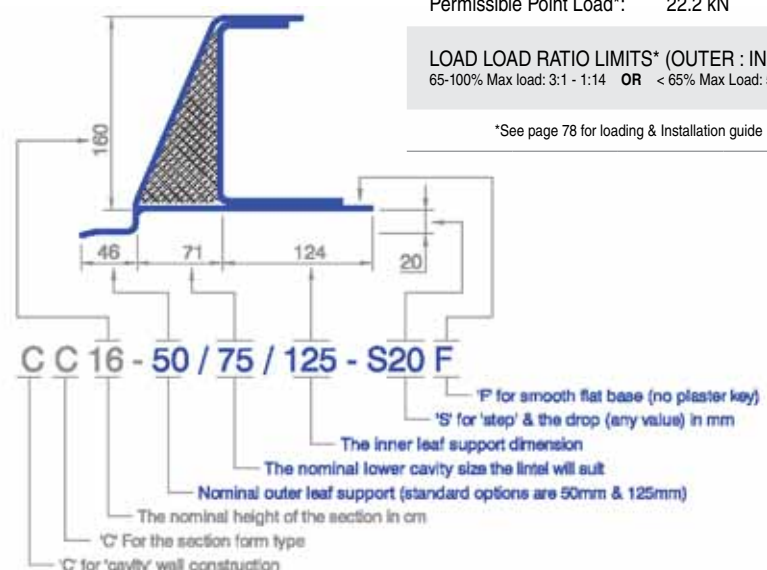
*See page 78 for loading & Installation guide

SPECIFYING OPTIONS FOR CC-TYPE LINTELS

The specification convention for CC lintels is shown here with an example. Should you require something different from the standard lintels listed in the tables, the specification components in blue can be varied to achieve non standard dimensions and features such as:

- a stepped outer,
 - flat base (no plaster key), or
 - shorter or longer inner and/or outer
- All as shown in the example to the right.

*Standard stop ends supplied are adhesive for installation on site. For fully welded stop-ends incorporated into the lintel, specify 'LINTRAY@'.



These lintels are designed specifically for manufacture in LDX2101® Stainless Steel. We have a separate range designed for manufacture in mild & 304 stainless steel. Visit www.lintels.co.uk for details.